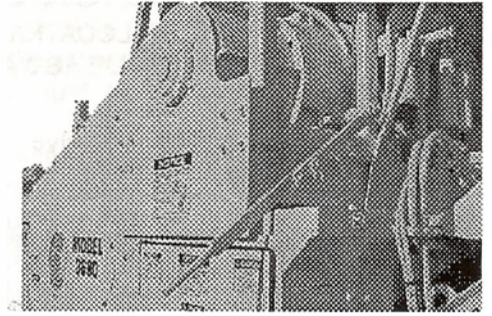


Model 3680 Beast Basic Location of Controls and Adjustments
2 Axle and 3 Axle Controls Are In The Same Basic Locations

CLUTCH ENGAGEMENT

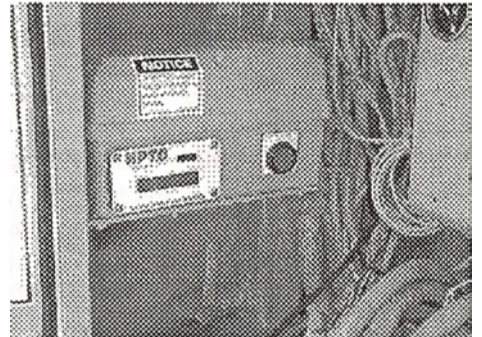
The engine must be running at low idle when engaging the clutch. The clutch is engaged by bumping-in. Bumping-in consists of several partial engagements using the clutch handle. A bump establishes rotation to the Cutterhead progressively increasing speed. After two or three bumps, the clutch handle is moved to the fully engaged center position. It will take most of your strength to engage the clutch fully. If it engages easily, do not operate the cyclo until the clutch has been properly adjusted. Remember it must take most of your strength to lock the clutch in place. The engine is now ready to be brought up to 1800 RPM with the throttle control.



Clutch Handle

HYDRAULIC CLUTCH ENGAGEMENT (OPTIONAL)

With the engine turned on and running at low idle, push and hold the start button on the hydraulic clutch control box for 3 seconds. When the display reads engaging the hydraulic clutch will automatically engage. Once it is fully engaged the machine is ready to operate.



Hydraulic Clutch Start

CONSULT THE ENGINE MANUFACTURER'S MANUAL FOR SPECIFIC CONTROLS FOR TYPICAL DIESEL ENGINES

Throttle Adjustment:

The engine throttle adjustment is located on the engine gauge panel inside the control cabinet. To increase engine speed, turn the knob clockwise. To decrease engine speed, turn the knob counterclockwise.

Oil Pressure Gauge:

The oil pressure gauge is located on the engine gauge panel inside the control cabinet. The engine shut down system is wired through this gauge. If the oil pressure is lost, the engine will shut down and all moving components will coast to a stop.

Engine Temperature Gauge:

The engine temperature gauge is located on the engine gauge panel inside the control cabinet. The engine shut down system is also through this gauge. If the coolant temperature gets too high, the engine will shut down and all moving components will coast to a stop.